

CUED SPEECH



USF's Cued Speech Initiative presents...

Summer Weekend Workshop

June 28-29, 9am-4pm

What is Cued Speech?

Cued Speech (CS) uses gestures with lip movements to convey English visually. CS facilitates English literacy. Some deaf people choose to use both ASL and CS.

Registration and more details:
<http://cuedspeech.usf.edu>

cuedspeech@cuedspeech.usf.edu
 -or-
 Katherine Pelley
 (813) 469-5288



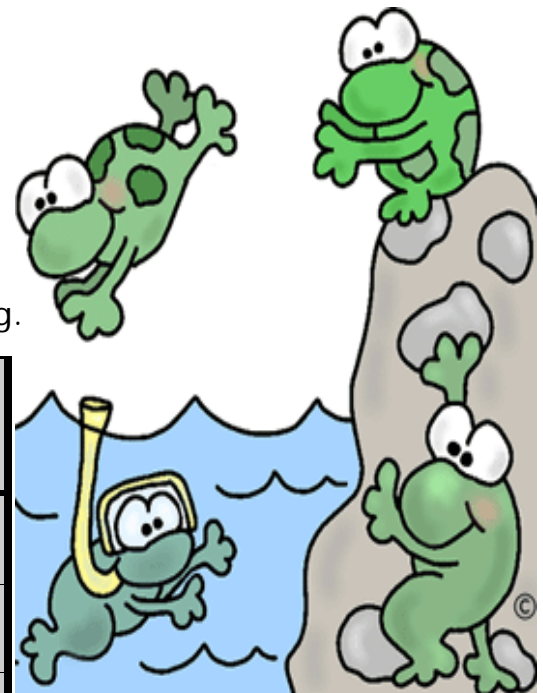
Can I learn Cued Speech in a weekend?

Yes! There are only eight handshapes and four placements to learn. You will be able to cue (slowly) anything you wish to say.

Who is teaching?

The Cued Speech Initiative at USF will provide a nationally certified instructor.

Additional students and professionals with CS experience will also be on hand to assist in training.



| Registration Fee: (non-refundable) | through June 6 th | June 7 th to June 25 th | after June 25 th or at door |
|---------------------------------------|---------------------------------|---|--|
| General Registration | \$150 | \$200 | \$250 |
| DHH Consumer | \$75 | \$100 | \$125 |
| Family Member | \$75 | \$100 | \$125 |
| USF | \$35 | \$55 | \$75 |
| Student | \$35 | \$55 | \$75 |

The FRID has been approved by the RID CMP to sponsor continuing education activities. This program is offered for 1.1 CEUs in the content area of Professional Studies and has an Introductory Instructional Level.



The Department of Communication Sciences and Disorders at the University of South Florida is approved by the Continuing Education Board of the American Speech-Language-Hearing Association (ASHA) to provide continuing education activities in speech-language pathology and audiology. This workshop is offered for 1.1 CEUs (intermediate level; professional area). ASHA CE Provider approval does not imply endorsement of course content, specific products, or clinical procedures.



COME LEARN TO CUE AND LEARN ABOUT USF'S ROLE IN CUED SPEECH!!